

Bombas Ercole
Marelli, Sundyne
Illescas Plant





Sundyne Plants All Over the world





Bombas Ercole Marelli–Sundyne Illescas, Toledo-Spain



Staff	+100
No. of Shifts	2
Workshop/Total	8,200 m2 / 18,700 m2
Installations	Owned
Products for	Oil & Gas/ Petrochemical /Chemical Built under API 610 11 th Edition
More than 10000 units installed worldwide for severe processes	
Certified as:	ISO 9001:2015 (11/2021) ISO 14001:2015 (11/2021) OHSAS 18001:2007 (03/2021) TR CU 10 (09/2020) TR CU 12 (03/2021) ATEX 94/CE – LOM 14





More than 55 years of relentless growth...

API 610 editions / release year

1964 1st ed. 1967 2nd ed. 1980 3rd ed. 1986 4th ed. 1987 5th ed. 1988 5th ed. 1989 7th ed. 1995 8th ed. 2002 9th ed. 2004 10th ed. 2010 11th ed.

BOMBAS GUINARD

SMK

LH

KSMK

DVMX

FG

FO / FOX

VSMK

FGB/TKVB



1963

1986

1999

2008 tdy

Changing for supporting our customer needs

2008



2012



2019



2008



2012



2019





Main Families by Sales : Heavy Duty Processes

Centrifugal Pumps for Heavy Duty Processes, designed as full compliant to API 610 11th Edition

OH2-SMK



BB2-KSMK



BB3-DVMX



VS4-VSMK/VSMKD



VS6- FGB & TKVB





Main Families by Sales : Utilities and OSBL

Pumps designed under API 610 concept dedicated to Off Site Boundary Limits



VS2-FQ



VS1-FG



VS2X-FQX



BB1-LH/PDH





...Pumps designed, manufactured, tested and serviced under the most stringent compliancy to API 610 11th edition...



...Customized Designs matching customers needs...



...centrifugal pumps running in the most severe environments...



Marelli fits the ample life cycle considered by API 610 standard as a minimum of 20years+



Brands Associated to Highest Reliability and Endurance with High Quality Records



VERTICAL PUMPS

- VS1/VS2/VS4/VS6
- High Alloys (PREN 40)
- 2,5MW
- 25 Tons.

Top-Top



Pipeline Down



Side on Side

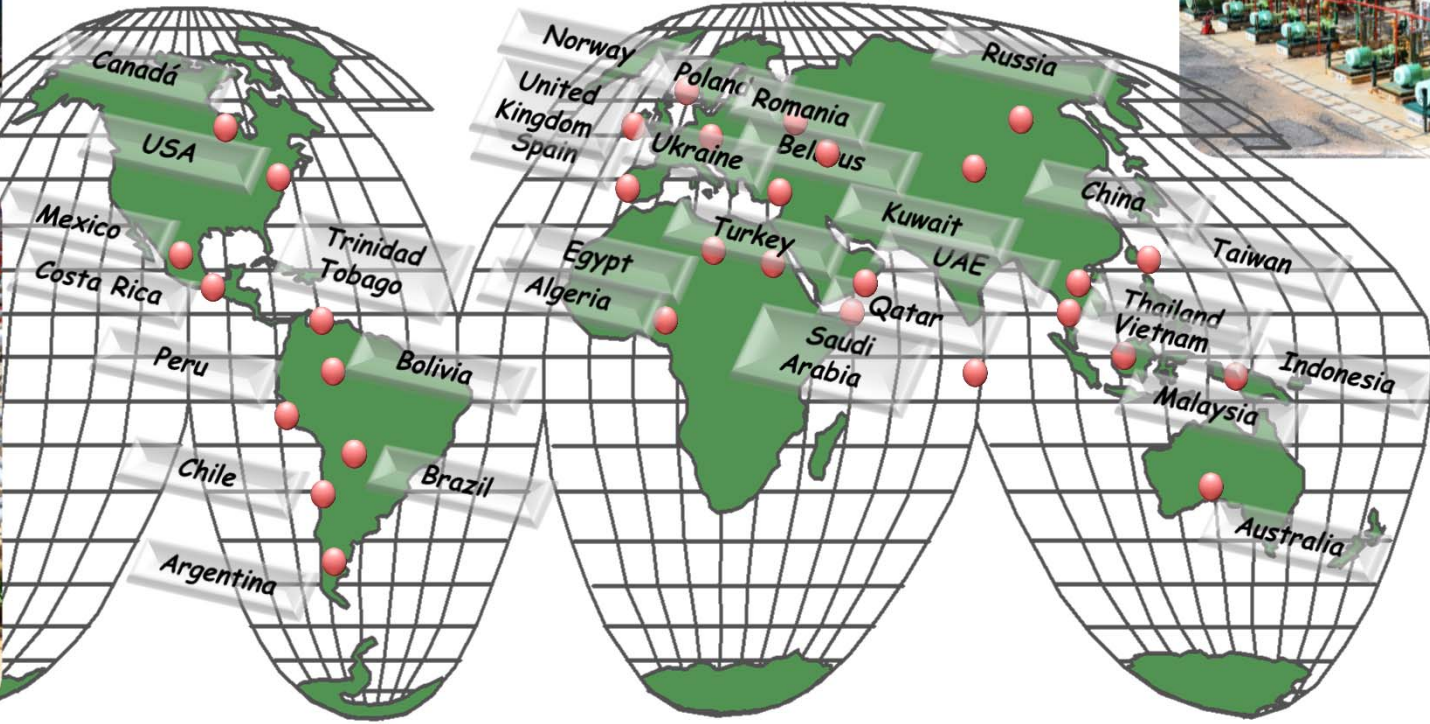


Pipeline Up



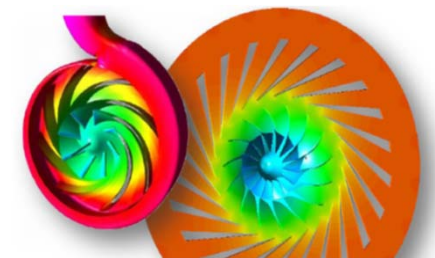
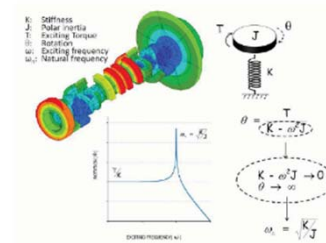
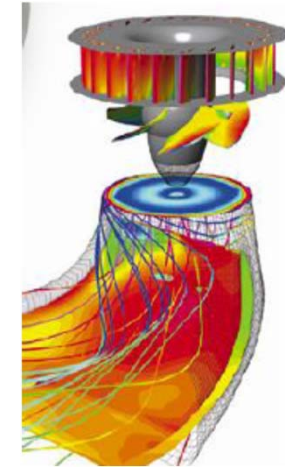


References all over the World



- **Pumps simulation and Design capability**
 - > ANSYS for different test and analysis (lateral, modal, torsional, baseplate stiffness ...)
 - > CFD for new pumps and upgrades
 - > 3D Scanner, models optimization
 - > Re-engineering to support the projects on site.

- **Test Bench Upgrade**
 - > Automatization and capacity increase
 - > Sectorization for better execution per pump families
 - > All test are available (mechanical run test, complete unit test...)
 - > All pumps lubrications available (purge oil mist, pure oil mist...)



- **Customer Intimacy**
 - > Each Applications Engineer per area / customer
 - Better interpretations of specifications
 - Quotation OTD
 - Same business culture

- **Market evolution**
 - > Tailor-made webinar for customers
 - > Trainings on site or in our factory

- **Passport P0 (Gates Process)**
 - > All department involved (Engineering, Projects, Operations, Financial, Legal, Contracts)
 - > The best technical and commercial solution

Operations:

■ Additive Manufacturing

- > To facilitate covering emergencies of our customers
- > To ensure our fast track supplies for some parts
- > To fix inventories at customer warehouse
- > To warrant sharpen delivery time

■ 3D Desing and Development

- > Upgrade of Hydraulics in each application
- > Facultative Support to Customer queries about installed equipment, either Sundyne's or another OEMs
- > Re-engineering of own obsolete parts and/or assemblies
- > Re-engineering of pump solutions for substituting another OEM's bad actors
- > ANSYS Torsional Analysis Calculation
- > Computerized Fluid Design for thermal and mechanical pump optimization
- > Refresh of pump of API 610 previous editions to latest (11th edition)
- > Simulations of running Modes for any pump in desing

